

Fig. S1

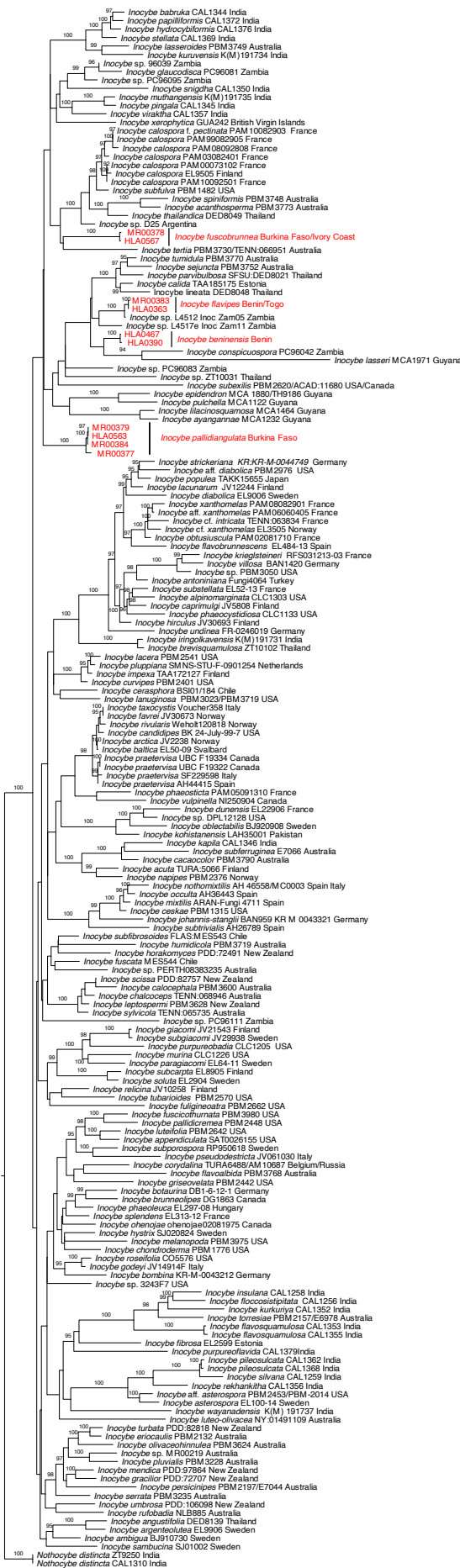


Fig. S1. ML tree of ITS+28S sequences showing the placement of *Inocybe beninensis*, *I. flavipes*, *I. fuscobrunnea* and *I. pallidiangulata*. For each node, the ML ultrafast bootstrap support $\geq 95\%$ is presented above or in front of the branch leading to that node.

Fig. S2

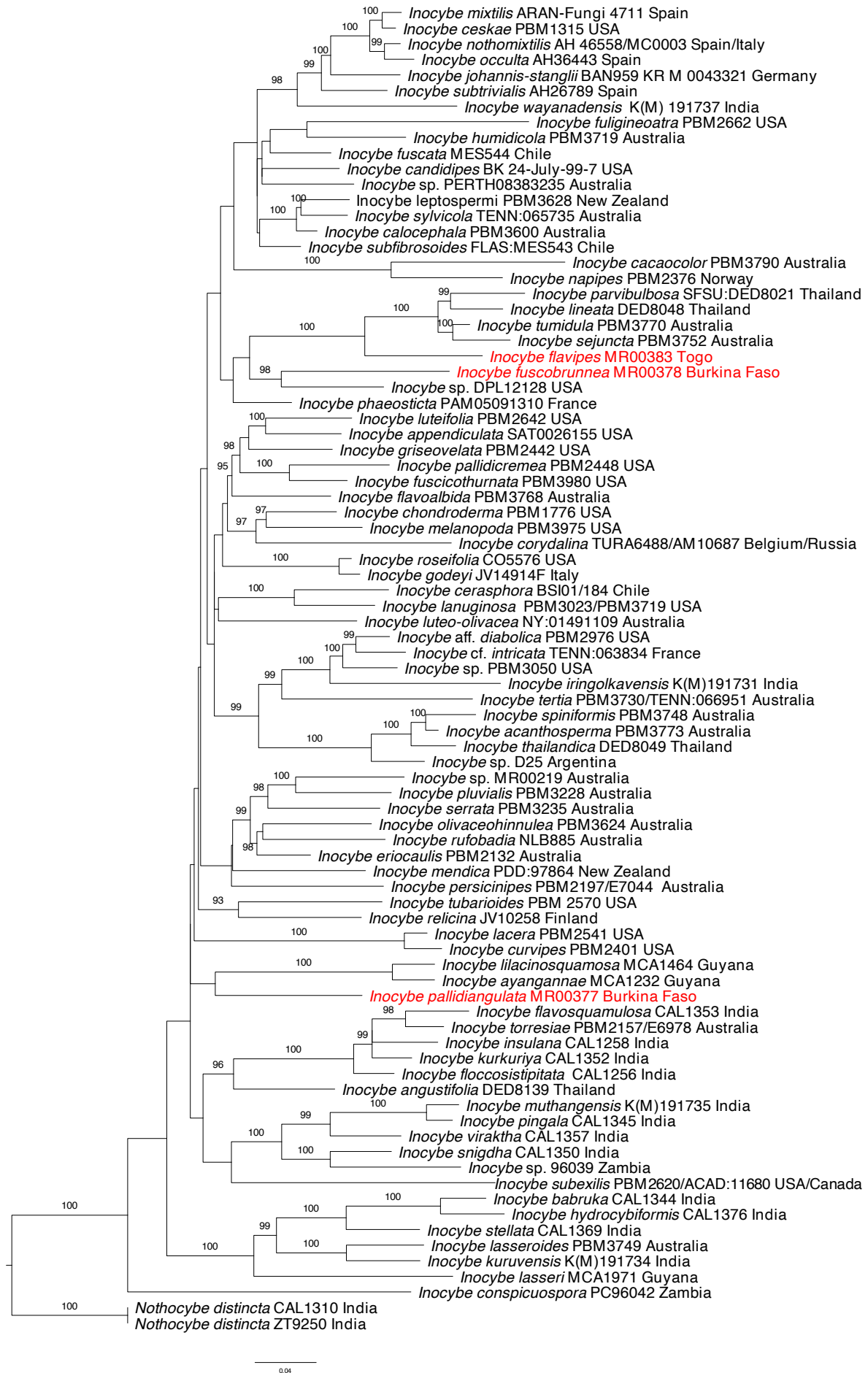


Fig. S2. ML tree of RPB2 sequences showing the placement of *Inocybe flavipes*, *I. fuscobrunnea* and *I. pallidiangulata*. For each node, the ML ultrafast bootstrap support $\geq 95\%$ is presented above or in front of the branch leading to that node.

Fig. S3

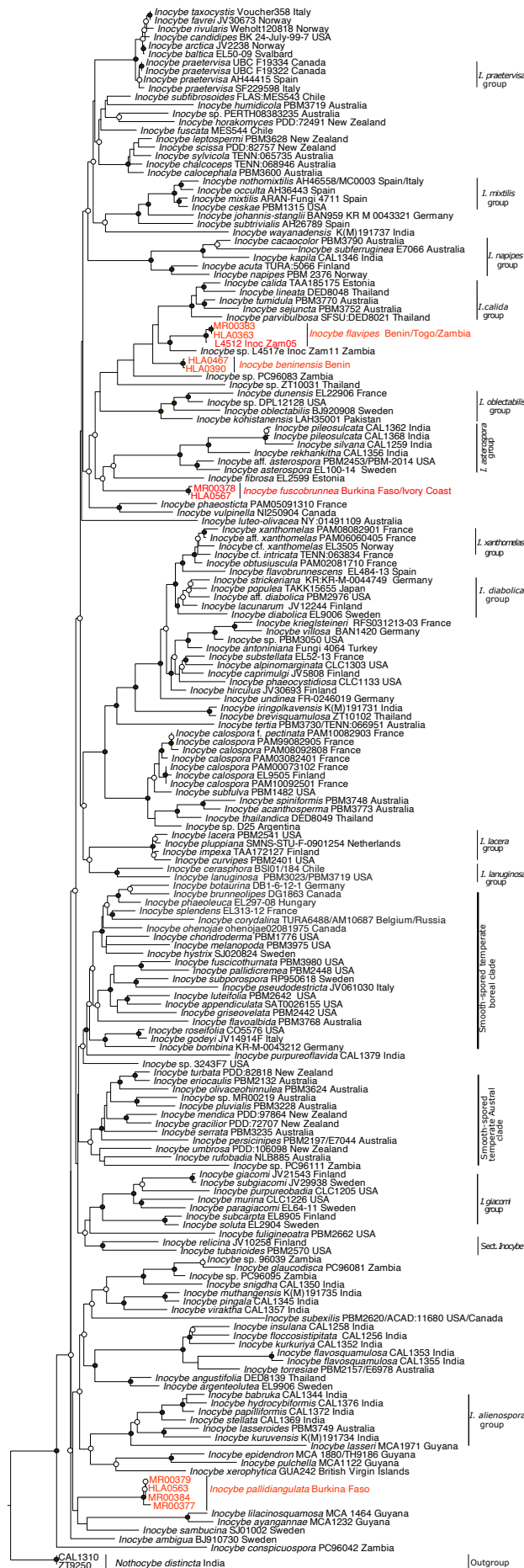


Fig. S3. ML tree showing the placement of four new species described from tropical regions of Africa: *Inocybe beninensis*, *I. flavipes*, *I. fuscobrunnea* and *I. pallidiangulata* based on phylogenetic analyses of ITS, 28S and *RPB2* data set.